

## SCR-16SSV CRASH RAIL

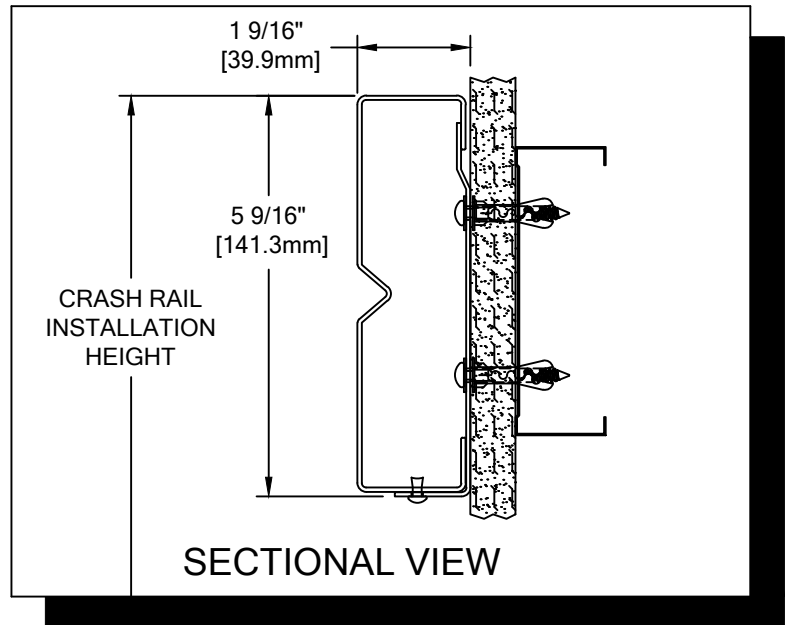
### PLEASE READ

PLEASE READ THESE INSTRUCTIONS THOROUGHLY PRIOR TO BEGINNING THE SCR-16SSV CRASH RAIL INSTALLATION!

THIS INSTRUCTION SHEET IS INTENDED TO PROVIDE A SPECIFIC GUIDE TO FOLLOW FOR THE INSTALLATION OF THIS SCR-16SSV CRASH RAIL. CONTAINED WITHIN IS THE TECHNICAL INFORMATION AND INSTALLATION TECHNIQUES REQUIRED TO COMPLETE AN EFFICIENT, NEAT AND LONG-LASTING INSTALLATION.

INSPECT ALL MATERIALS FOR DAMAGE OR MISSING PARTS. IF YOU DISCOVER DAMAGED OR MISSING MATERIALS, IN THE USA PLEASE NOTIFY THE FACTORY AT (800) 233-8493, AND IN CANADA (888) 895-8955 FOR CUSTOMER SERVICE.

SCR-16SSV CRASH RAIL MUST BE INSTALLED IN ACCORDANCE WITH THESE INSTRUCTIONS! FAILURE TO FOLLOW THESE INSTRUCTIONS MAY VOID ANY PRODUCT WARRANTIES AND RESULT IN AN UNSUCCESSFUL INSTALLATION. FOR SPECIFIC QUESTIONS REGARDING THE INSTALLATION OF THIS SCR-16SSV CRASH RAIL PLEASE CALL THE FACTORY IN THE USA AT (800) 233-8493 OR EMAIL [IWPTECHSUPPORT@C-SGROUP.COM](mailto:IWPTECHSUPPORT@C-SGROUP.COM). IN CANADA CALL (888) 895-8955.

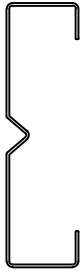


### IMPORTANT NOTES

1. THIS MATERIAL HAS BEEN MANUFACTURED TO CUSTOMER SPECIFIED DIMENSIONS AND CAN NOT BE CUT OR MODIFIED ON SITE. TO DO SO COULD VOID THE WARRANTY.
2. ALL DIMENSIONS ARE TYPICAL.
3. FOR DRYWALL/PLASTER WALL CONSTRUCTION, IT IS RECOMMENDED FOR FASTENERS TO BE ENGAGED INTO METAL/WOOD STUDS TO MAINTAIN MAXIMUM PULLOUT STRENGTH.
4. MATERIAL MUST REACH 65°F MIN. TO 75°F MAX. 24 HOURS PRIOR TO INSTALLATION. THIS IS ESSENTIAL TO MINIMIZE EXPANSION AND CONTRACTION OF MATERIAL.
5. THIS CRASH RAIL REQUIRES A MINIMUM OF 2 MOUNTING BRACKETS PER UNIT.
6. FOR MORE INFORMATION ON SCR-16SSV CRASH RAIL SEE OUR WEBSITE AT [www.c-sgroup.com](http://www.c-sgroup.com)

SCR-16SSV CRASH RAIL

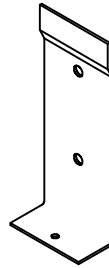
COMPONENTS & WALL FASTENERS



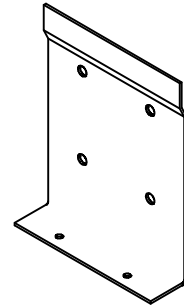
SCR-16SSV CRASH RAIL  
(24S009000)



SCR-16SSP CRASH RAIL  
(24S010000)



2" MOUNTING BRACKET  
(24S024000)



4" MOUNTING BRACKET  
(24S025000)

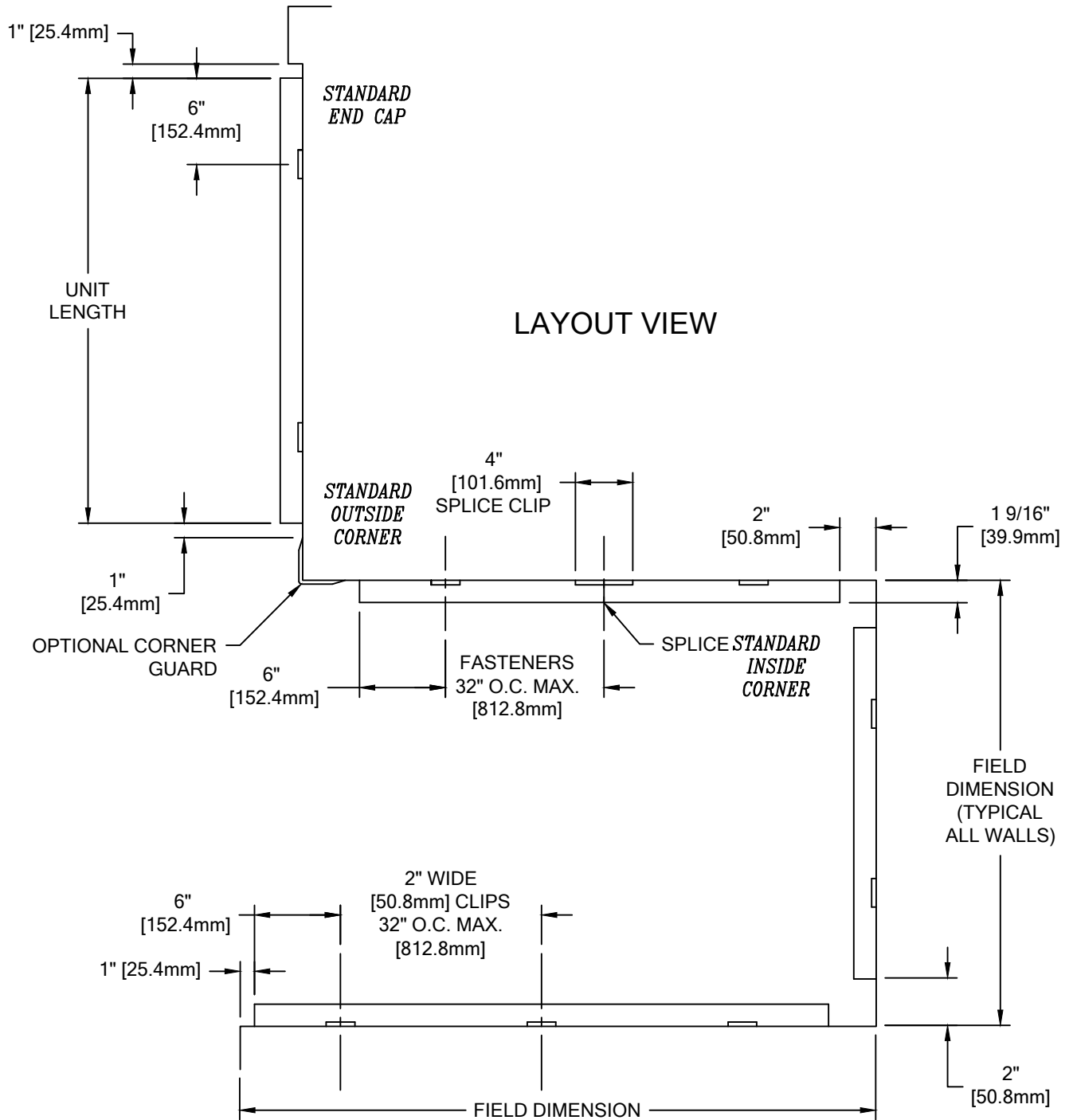


FASTENER #1  
POP RIVET  
(90H966002)

WALL CONDITION	SPECIFIED FASTENER	DRILL DIAMETERS		C/S PART NUMBER
		WALL	RETAINER	
STEEL STUD/GYPSUM WALL	AF-6 PLASTIC ANCHOR #10 X 1-1/2" PHILLIPS PAN HD. SMS	15/64"	N/A	90H039004 90H189002
CONCRETE/CONC. BLOCK	AF-6 PLASTIC ANCHOR #10 X 1-1/2" PHILLIPS PAN HD. SMS	1/4"	N/A	90H039004 90H189002
WOOD STUD/GYPSUM WALL	AF-6 PLASTIC ANCHOR #10 X 1-1/2" PHILLIPS PAN HD. SMS	15/64"	N/A	90H039004 90H189002

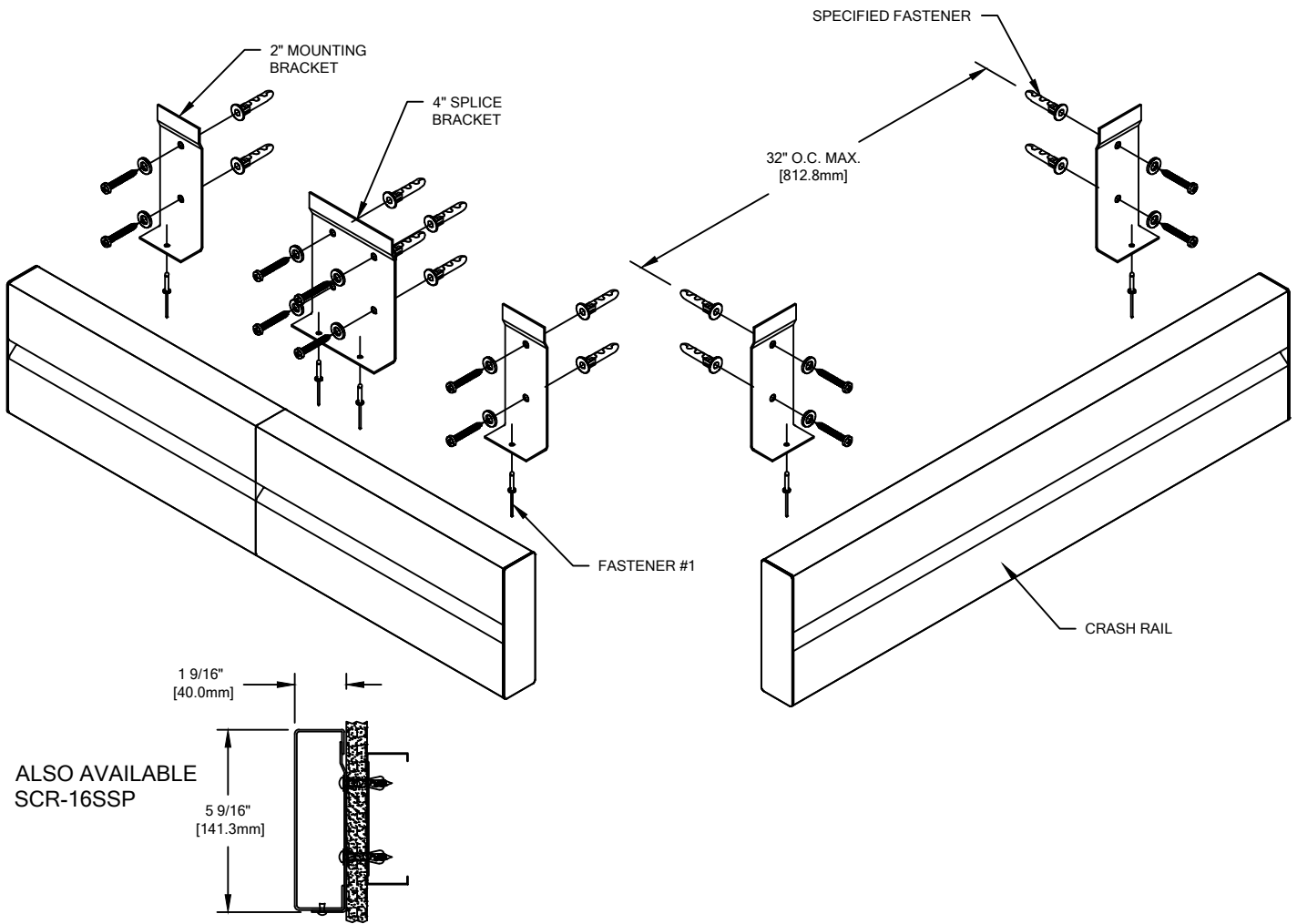
SCR-16SSV CRASH RAIL

LAYOUT VIEW



**SCR-16SSV CRASH RAIL**

TYPICAL ASSEMBLY



ALSO AVAILABLE  
SCR-16SSP

1. ESTABLISH CRASH RAIL HEIGHT ABOVE FINISH FLOOR. DEDUCT 5-9/16" [141.3mm] AND SNAP A CHALK LINE AT THAT HEIGHT. THIS MARKS THE LOWEST POINT OF THE MOUNTING BRACKET.
2. DETERMINE AND MARK THE LOCATION OF THE CLIPS BY USING THE REQUIRED DEDUCTIONS (SEE LAYOUT VIEW). ALIGN THE BOTTOM EDGE OF THE MOUNTING BRACKET WITH THE CHALK LINE ESTABLISHED IN "STEP 1". USING THE BRACKET AS A TEMPLATE, MARK THE LOCATION OF THE TOP AND BOTTOM FASTENERS. DRILL CLEARANCE HOLES IN WALL SURFACE FOR THE MOUNTING HARDWARE. REFERENCE CHART ON PAGE 2 FOR DRILL DIAMETERS.
3. SECURE BRACKETS TO THE WALL SURFACE USING THE REQUIRED FASTENERS. USE A LEVEL TO ENSURE BRACKETS ARE PLUMB.
4. REMOVE PROTECTIVE PLASTIC COATING FROM RAIL FACE.
5. PLACE CRASH RAIL INTO POSITION BY CLIPPING THE TOP OF THE CRASH RAIL ONTO THE BRACKET, ALLOWING THE BOTTOM OF THE RAIL TO REST ON THE BOTTOM SHELF OF THE BRACKET.
6. ATTACH CRASH RAIL TO WALL BRACKET:
  - AT EACH BRACKET LOCATION, DRILL A 9/64" HOLE IN THE BOTTOM OF THE RAIL.
  - ATTACH RAIL TO BRACKET USING POP RIVETS PROVIDED.